



**72 UPLANDS DRIVE  
MARKDALE**

# VILLA 'B'

INTERIOR UNIT  
1411 SQ.FT.

**MOVE-IN READY**

## PROPERTY FEATURES:

- \* Upgrade basement window
- \* Provisions for a 3pc basement bathroom
- \* Ensuite with upgrade 5' Shower & shower faucet
- \* Hardwood floor Great Room, Kitchen & Dinette
- \* Upgrade kitchen w/ island with breakfast bar, SS Hood fan & upgrade faucet
- \* Upgrade interior hardware
- \* Stained oak shaker railing with contempora spindles
- \* Potlights and fan wire rough-in in the Great Room

**Contact us today at 519-986-4471**



**DEVONLEIGH HOMES INC.**

WEB: [DevonleighHomes.com](http://DevonleighHomes.com)

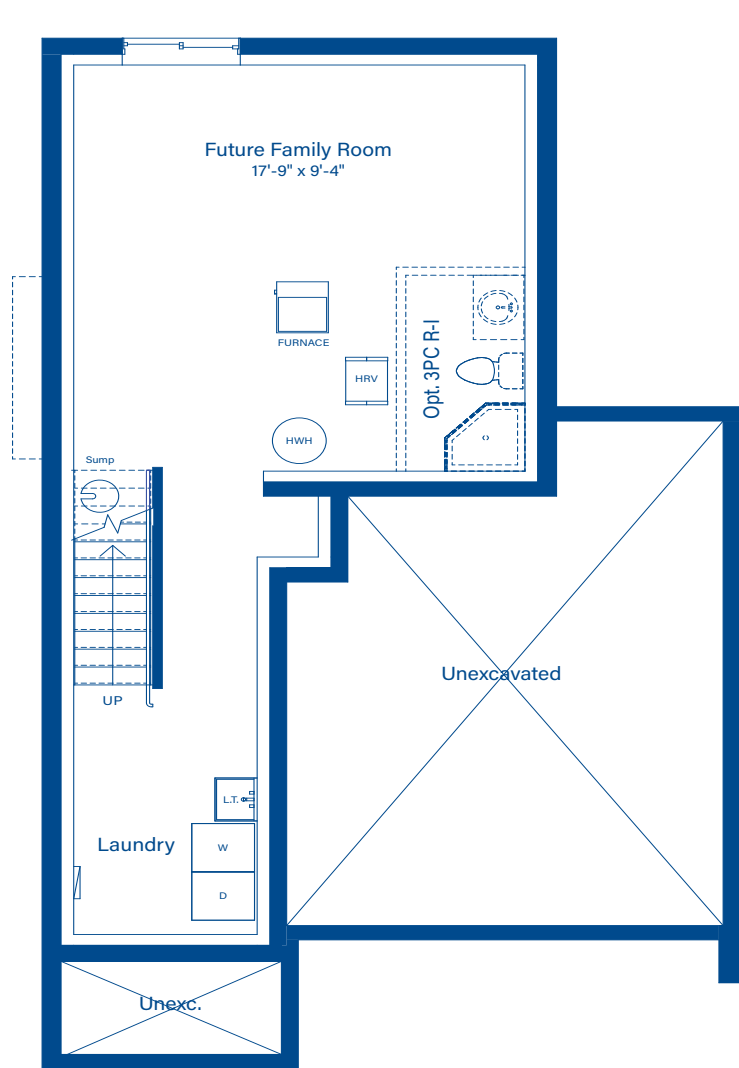
Plans and specifications are subject to change without notice.  
All renderings and photographs are artist's concept. E&O.E.

BLOCK 102-7 UPLANDS DRIVE

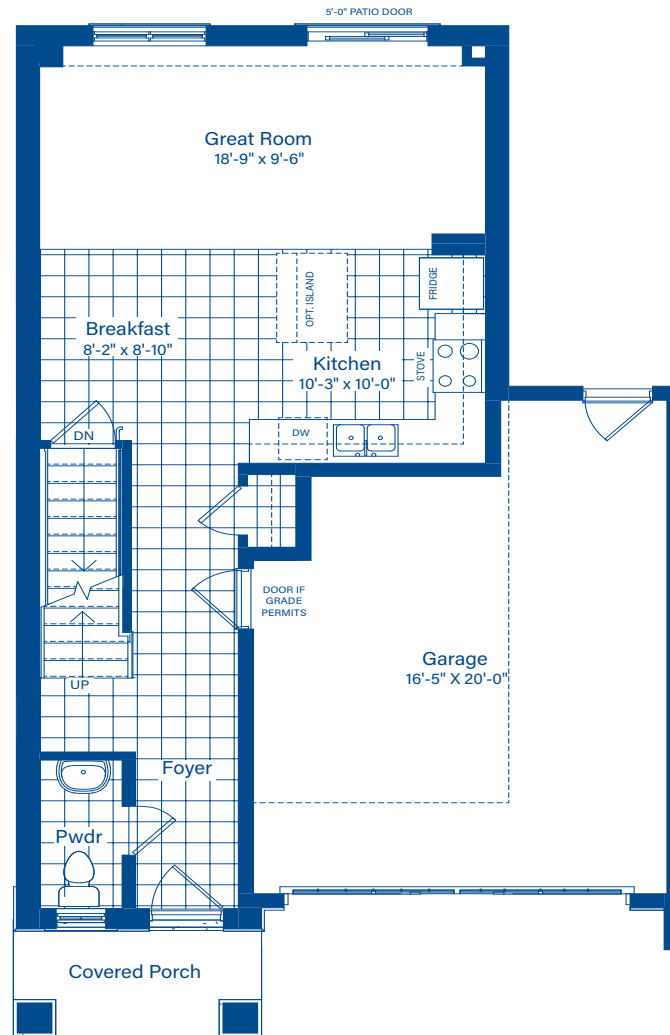
# VILLA 'B' (Interior Unit)

Block 102 Unit 7

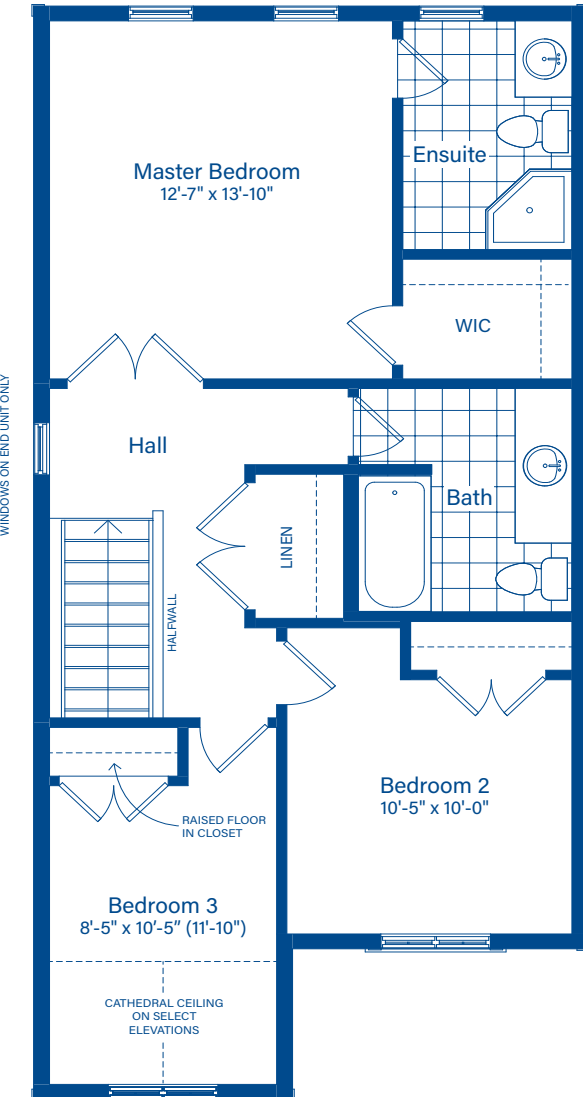
72 Uplands Drive, Markdale 1411 SQ.FT.



BASEMENT



MAIN FLOOR



2ND FLOOR

